

“TOOLS FOR SUCCESS” TOOL CADDY

Materials Needed:

1. 1x8x8'-0"
2. 3/4" diameter x 24" long Dowel Rod (Qty: 1)
3. 2" Nails (Qty: 22)
4. Primer/Paint or Stain (optional)

Tools Needed:

1. Miter Saw or Circular Saw or Other Saw
2. Hammer
3. Power Drill
4. 3/4" Drill Bit
5. Sandpaper
6. Pencil
7. Measuring Tape
8. Speed Square or Ruler/Straight Edge
9. Safety Glasses
10. Work Gloves
11. Paint Brush or Paint Roller (optional)
12. Putty and Putty Knife (optional)
13. Caulk and Caulk Gun (optional)

Grade Level: 4 - 12

Project Time: 1 hour + Paint or Stain Time



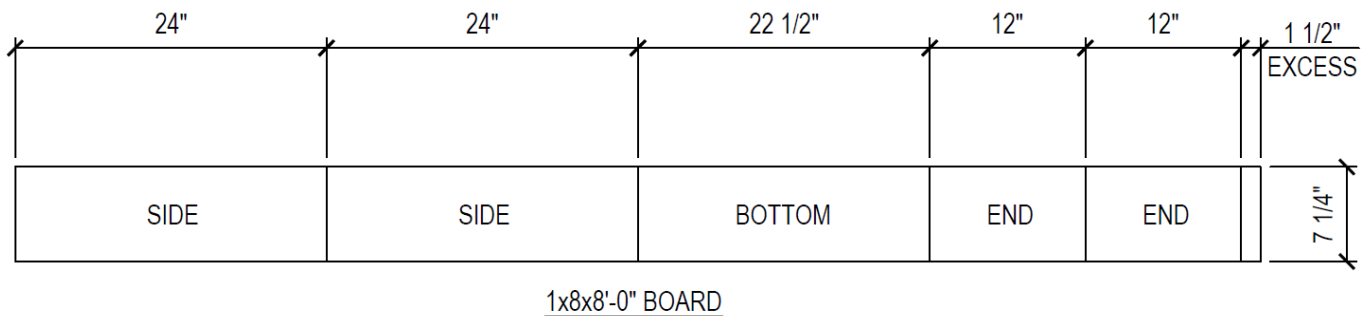
How this helps Maumee Valley Habitat for Humanity:

The Tool Caddy will be donated to Future Homeowners and/or sold in our ReStore. THANK YOU for making a difference.

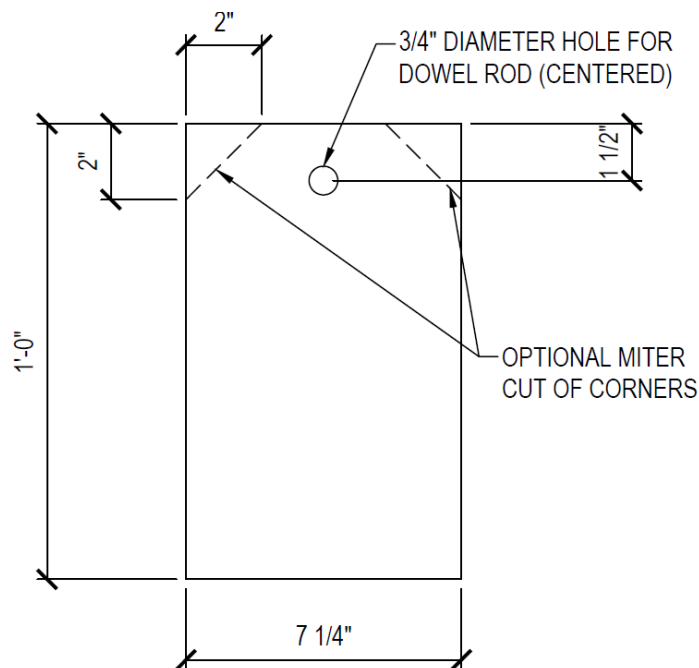


Instructions:

1. Before starting, carefully read through all the instruction.
2. Measure, mark, and cut the 1x8x8'-0" board to appropriate lengths as shown below.
 - a. Side Pieces: 1x8x24" (Qty: 2)
 - b. Bottom Piece: 1x8x22 1/2" (Qty: 1)
 - c. End Pieces: 1x8x12" (Qty: 2)

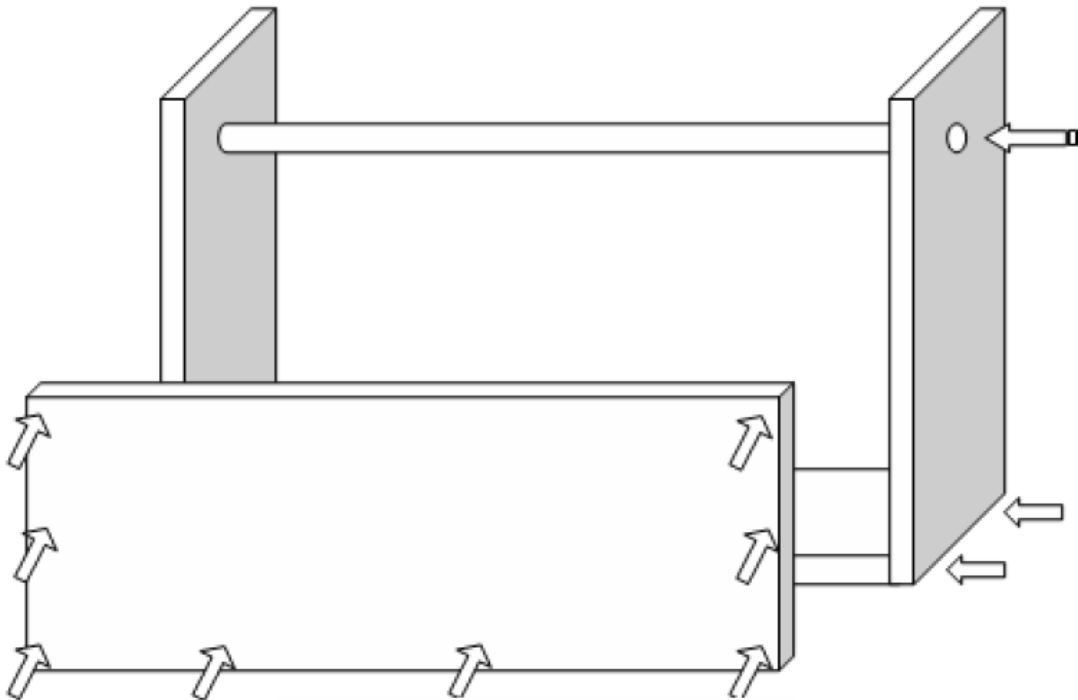


3. Cut Dowel Rod to a 24" length (if required).
4. Measure, mark, and drill a 3/4" diameter hole in both of the end pieces for the dowel rod. Note, the center of the hole is 1 1/2" down from the top and the hole is centered across.
 - a. Optional Step: Measure, mark, and cut the top corners off the end pieces as shown below.



Instructions:

5. Optional Step: Paint or Stain wood before assembly or after it is built.
6. Assembly (See Diagram Below):
 - a. Tap the dowel into the hole near the top of each end piece to make the handle.
 - b. Fit the bottom piece evenly at the bottom between the two end pieces, parallel to the dowel rod.
 - c. Fasten the end pieces to the bottom piece with 2 nails at each end as shown.
 - d. Fit each side piece to the end and bottom pieces. Fasten the side piece to each end piece with 3 evenly spaced nails. Fasten the side piece to the bottom piece with 2 additional evenly spaced nails. Repeat on the other side.



7. Optional Step: Paint, Stain, or Decorate your Tool Caddy.
 - a. Also, consider other ways to use this project (example: flower box or craft box). Be creative!
8. Clean up your work area and your Tool Caddy is complete! Thanks for all your hard work!



Maumee Valley
Habitat
for Humanity®
mvhabitat.org

Instructions:

9. Additional Photos:



Questions about this activity? Please contact our Volunteer Manager at dhammer@mvhabitat.org